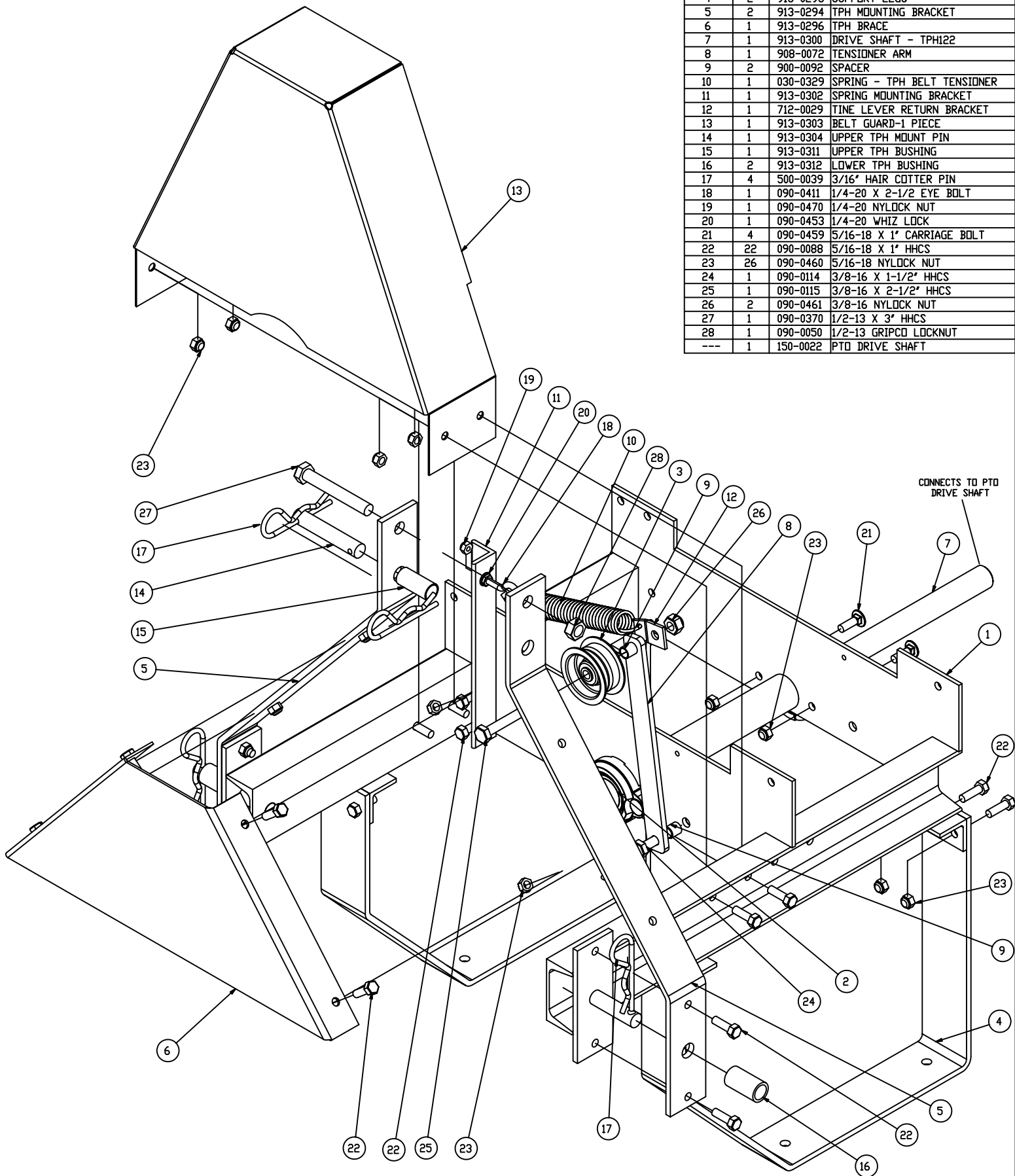
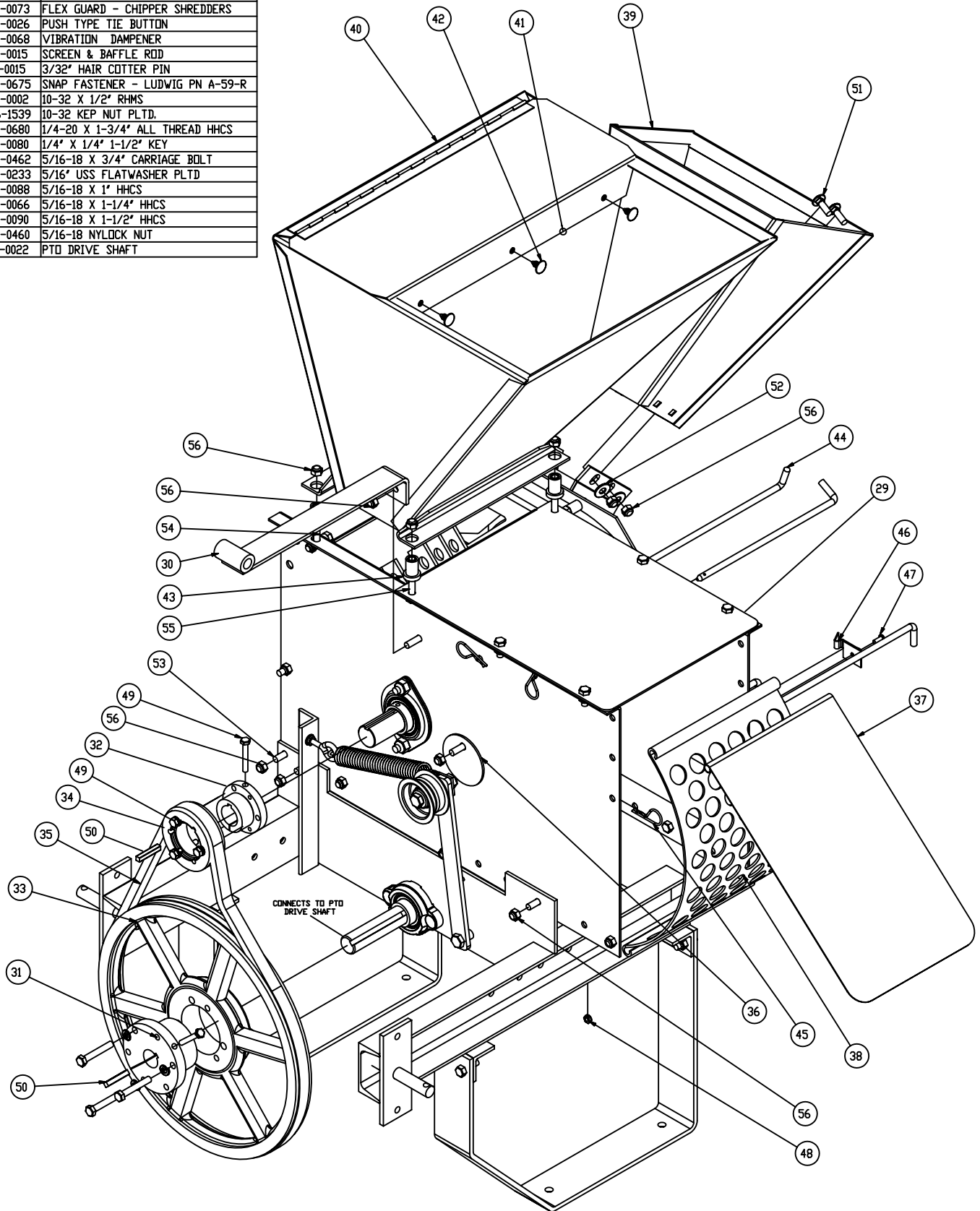

SECTION VI - PARTS

Parts List				
ITEM	QTY	PART #	DESCRIPTION	
1	1	913-0307	TPH122 FRAME WELDMENT	
2	2	030-0055	1" BORE BEARING	
3	1	909-0012	IDLER PULLEY	
4	2	913-0293	SUPPORT LEGS	
5	2	913-0294	TPH MOUNTING BRACKET	
6	1	913-0296	TPH BRACE	
7	1	913-0300	DRIVE SHAFT - TPH122	
8	1	908-0072	TENSIONER ARM	
9	2	900-0092	SPACER	
10	1	030-0329	SPRING - TPH BELT TENSIONER	
11	1	913-0302	SPRING MOUNTING BRACKET	
12	1	712-0029	TINE LEVER RETURN BRACKET	
13	1	913-0303	BELT GUARD-1 PIECE	
14	1	913-0304	UPPER TPH MOUNT PIN	
15	1	913-0311	UPPER TPH BUSHING	
16	2	913-0312	LOWER TPH BUSHING	
17	4	500-0039	3/16" HAIR COTTER PIN	
18	1	090-0411	1/4-20 X 2-1/2" EYE BOLT	
19	1	090-0470	1/4-20 NYLOCK NUT	
20	1	090-0453	1/4-20 WHIZ LOCK	
21	4	090-0459	5/16-18 X 1" CARRIAGE BOLT	
22	22	090-0088	5/16-18 X 1" HHCS	
23	26	090-0460	5/16-18 NYLOCK NUT	
24	1	090-0114	3/8-16 X 1-1/2" HHCS	
25	1	090-0115	3/8-16 X 2-1/2" HHCS	
26	2	090-0461	3/8-16 NYLOCK NUT	
27	1	090-0370	1/2-13 X 3" HHCS	
28	1	090-0050	1/2-13 GRIPCO LOCKNUT	
---	1	150-0022	PTD DRIVE SHAFT	



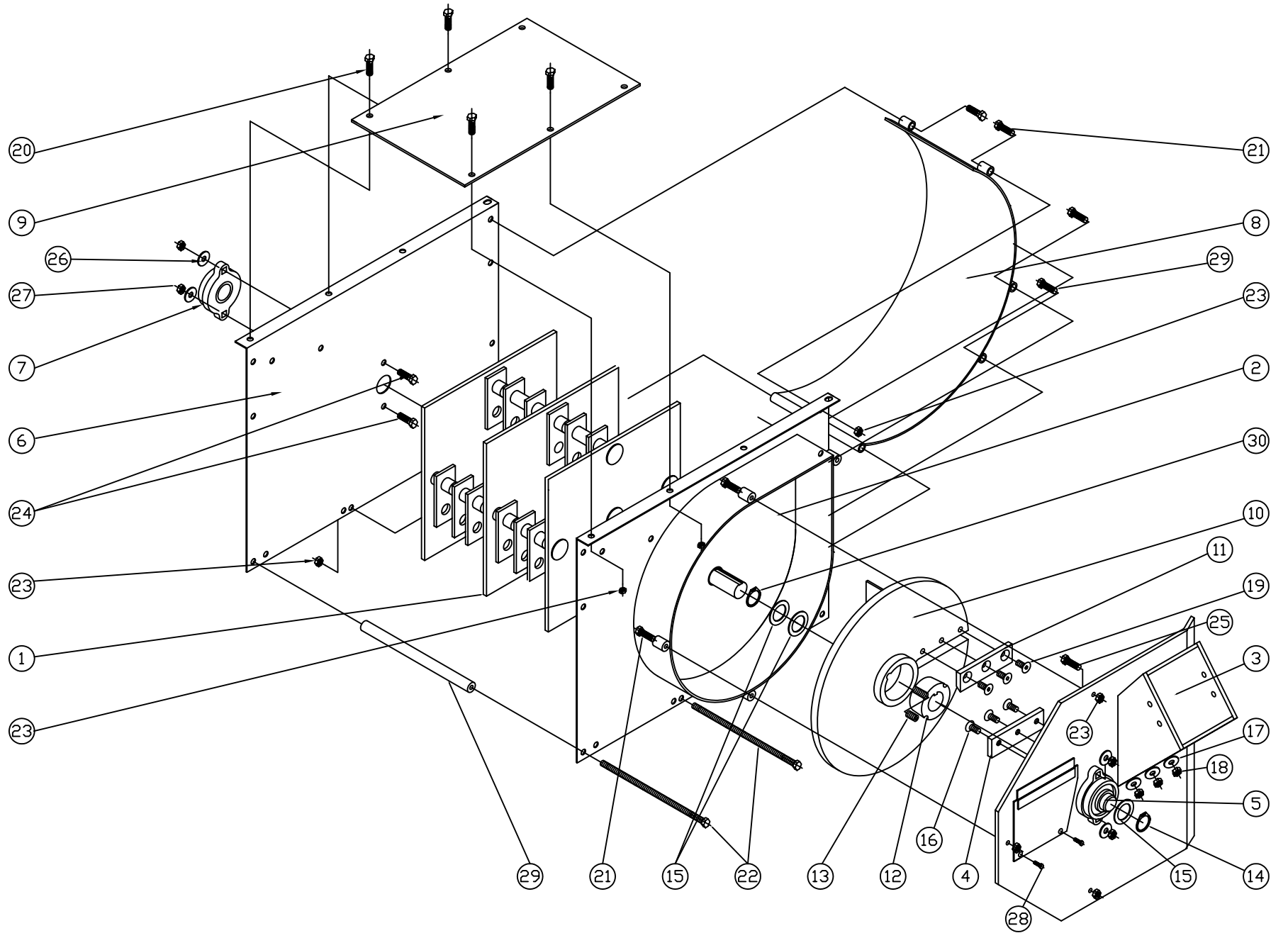
TPH122 FRAME ASSEMBLY

TPH BASIC AND PULLEY ASSEMBLY			
ITEM	QTY	PART #	DESCRIPTION
29	1	900-0147	12P BASIC UNIT - 96
30	1	913-0309	TPH122 UPPER SUPPORT WELDMENT
31	1	030-0333	1" SK BUSHING
32	1	030-0052	BUSHING SH 1-3/16" BORE
33	1	030-0328	3V14 2 GR SHEAVE
34	1	030-0493	3V3.35 2GR SHEAVE
35	1	030-0330	BELT - 3VX530 TWO GROOVE
36	1	900-0040	COVER PLATE
37	1	900-0010	BAFFLE PLATE
38	1	500-0004	1" DIA SCREEN - 12P
39	1	913-0379	CHIPPER HOPPER KIT
40	1	900-0046	SHREDDER HOPPER
41	1	900-0073	FLEX GUARD - CHIPPER SHREDDERS
42	3	800-0026	PUSH TYPE TIE BUTTON
43	4	500-0068	VIBRATION DAMPENER
44	4	500-0015	SCREEN & BAFFLE ROD
45	3	100-0015	3/32" HAIR COTTER PIN
46	1	090-0675	SNAP FASTENER - LUDWIG PN A-59-R
47	1	090-0002	10-32 X 1/2" RHMS
48	1	706-1539	10-32 KEP NUT PLTD.
49	5	090-0680	1/4-20 X 1-3/4" ALL THREAD HHCS
50	2	080-0080	1/4" X 1/4" 1-1/2" KEY
51	4	090-0462	5/16-18 X 3/4" CARRIAGE BOLT
52	4	090-0233	5/16" USS FLATWASHER PLTD
53	18	090-0088	5/16-18 X 1" HHCS
54	2	090-0066	5/16-18 X 1-1/4" HHCS
55	2	090-0090	5/16-18 X 1-1/2" HHCS
56	30	090-0460	5/16-18 NYLOCK NUT
---	1	150-0022	PTD DRIVE SHAFT



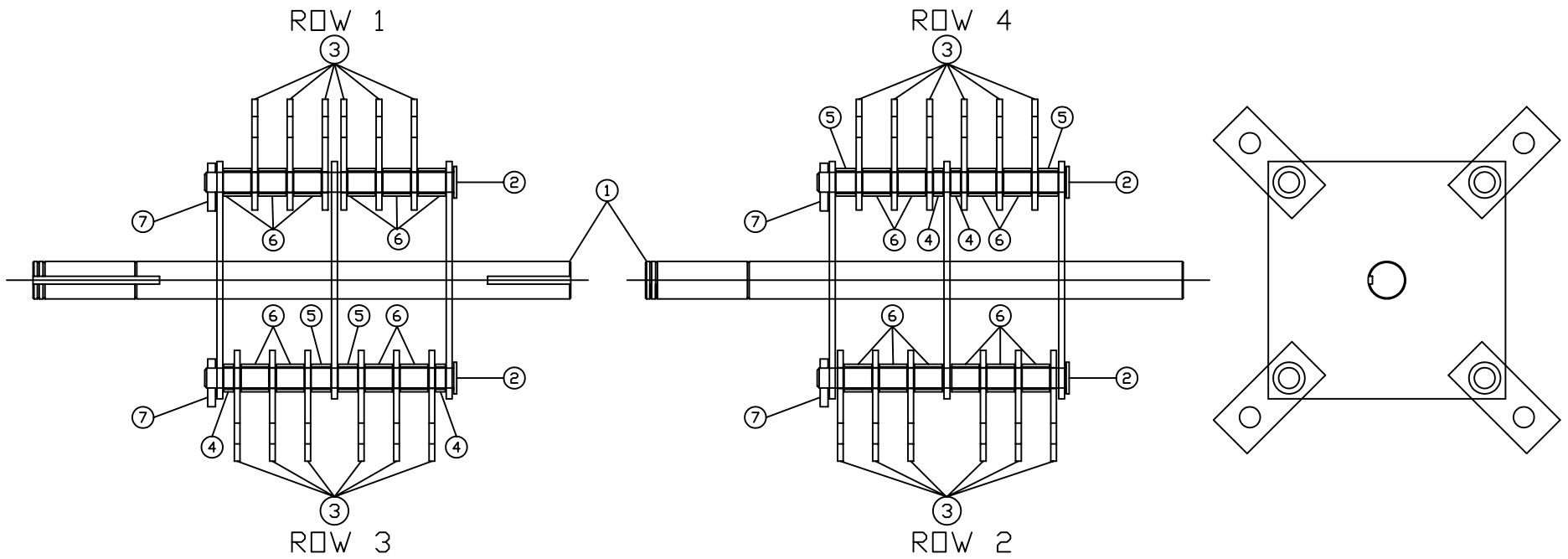
TPH122 BASIC AND PULLEY ASSEMBLY

12P/PT/PTE BASIC MACHINE ASSEMBLY



12P/PT/PTE
BASIC MACHINE ASSEMBLY

900-0148
12P/PT/PTE
ROTOR ASSEMBLY



12P/PT/PTE
ROTOR ASSEMBLY

**900-0147 – 12P/PT/PTE BASIC MACHINE
PARTS LIST**

ITEM #	PART #	QTY	DESCRIPTION
1	900-0148	1	ROTOR ASSEMBLY
2	900-0097	1	CHIPPER SIDE PLATE WELDMENT
3	900-0336	1	CHIPPER PLATE AND CHUTE WELDMENT
4	913-0325	1	WEAR PLATE
5	030-0279	1	1 3/16" BEARING – CHIPPER SIDE
6	900-0096	1	DRIVE SIDE PLATE
7	030-0134	1	1 3/16" BEARING – DRIVE SIDE
8	900-0005	1	SCROLL WELDMENT
9	900-0045	1	TOP PLATE
10	900-0016	1	CHIPPER DISK WELDMENT
11	030-0498	1	KNIFE
12	030-0118	1	TAPERLOCK BUSHING
13	020-0001	2	3/8-16 X 5/8" SET SCREW
14	030-0117	1	RETAINING RING
15	090-0023	3	SHIM
16	090-0257	3	1/4-20 X 1" FHSCS
17	090-0245	3	1/4 SAE FLATWASHER
18	090-0470	3	1/4-20 NYLOCK NUT
19	090-0258	3	5/16-18 X 3/4" FHSCS
20	090-0088	4	5/16-18 X 3/4" HHCS
21	090-0089	9	5/16-18 X 1 1/4" HHCS
22	500-0064	2	5/16-18 X 9 1/2" HHCS
23	090-0048	17	5/16-18 GRIPCO LOCK NUT
24	090-0110	2	3/8-16 X 1" HHCS
25	090-0121	2	3/8-16 X 1 1/4" HHCS
26	090-0240	4	3/8" SAE FLATWASHER
27	090-0049	4	3/8-16 GRIPCO LOCK NUT
28	090-0162	4	10-32 X 3/8" SELF TAPPING SCREW
29	090-0090	2	5/16-18 X 1-1/2 HHCS
30	090-0676	1	SHR-118 RETAINING RING
31	900-0071-1	1	ACCESS COVER

900-0148 – 12P/PT/PTE ROTOR ASSEMBLY

ITEM #	PART #	QTY	DESCRIPTION
1	900-0084	1	ROTOR WELDMENT
2	900-0100-3	4	HAMMER ROD
3	500-0008	24	HAMMERS
4	500-0010	4	SPACER – 5/16"
5	500-0012	4	SPACER – 5/8"
6	500-0011	20	SPACER – 7/8"
7	030-0153	4	GROOVE PIN